

Script “iqstreamcntr”

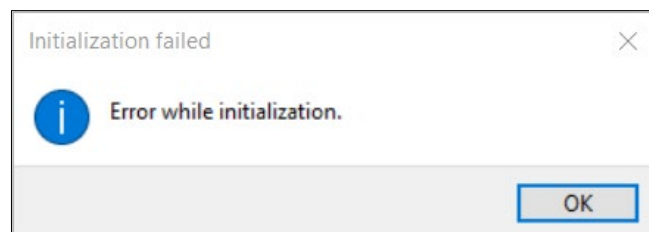
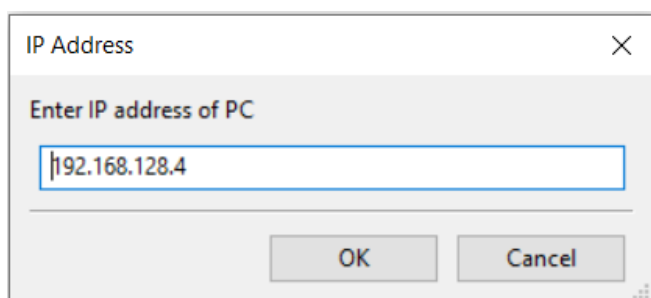
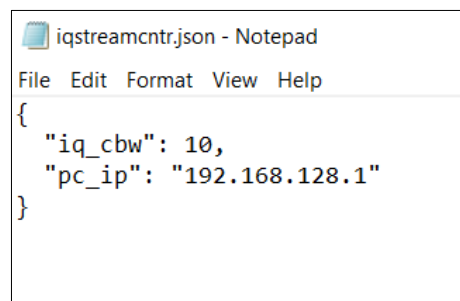
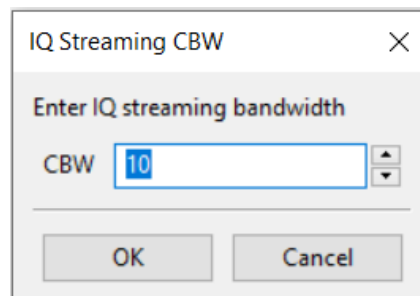
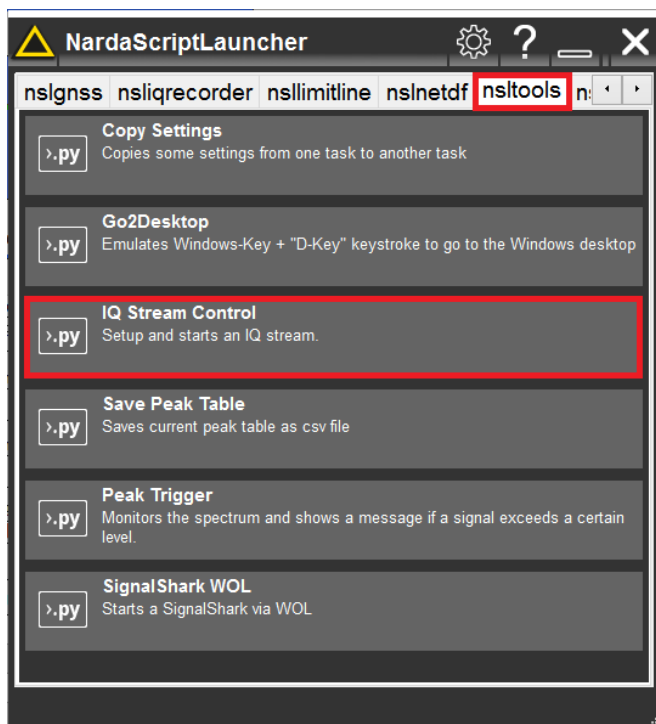
Description:

The script "iqstreamcntr" allows the user to setup and start IQ streams by using signalshark SCPI commands.

When the script executes, it asks the user to enter the IP address of the PC, and then the CBW of the IQ stream. The script then allows the signalshark device to establish its connection with the PC and start the IQ stream. Additionally, the script saves the CBW and the IP address of the PC in the iqstreamcntr.json file in the project directory for later referencing.

Procedure

1. Open the Narda Script Launcher application and select the "nsltools" tab.
2. Select the script "IQ Stream Control".



Narda Safety Test Solutions GmbH
Sandwiesenstrasse 7
72793 Pfullingen, Germany
Phone +49 7121 97 32 0
info@narda-sts.com

www.narda-sts.com

Narda Safety Test Solutions
North America Representative Office
435 Moreland Road
Hauppauge, NY 11788, USA
Phone +1 631 231 1700
info@narda-sts.com

Narda Safety Test Solutions GmbH
Beijing Representative Office
Xiyuan Hotel, No. 1 Sanlihe Road, Haidian
100044 Beijing, China
Phone +86 10 6830 5870
support@narda-sts.cn

® Names and Logo are registered trademarks of Narda Safety Test Solutions GmbH – Trade names are trademarks of the owners.