

22.3 Personal Monitor RadMan 2 – totally flexible

Personal Monitors are, as the name suggests, part of your personal protective equipment. And the limit values that they measure are set in stone.

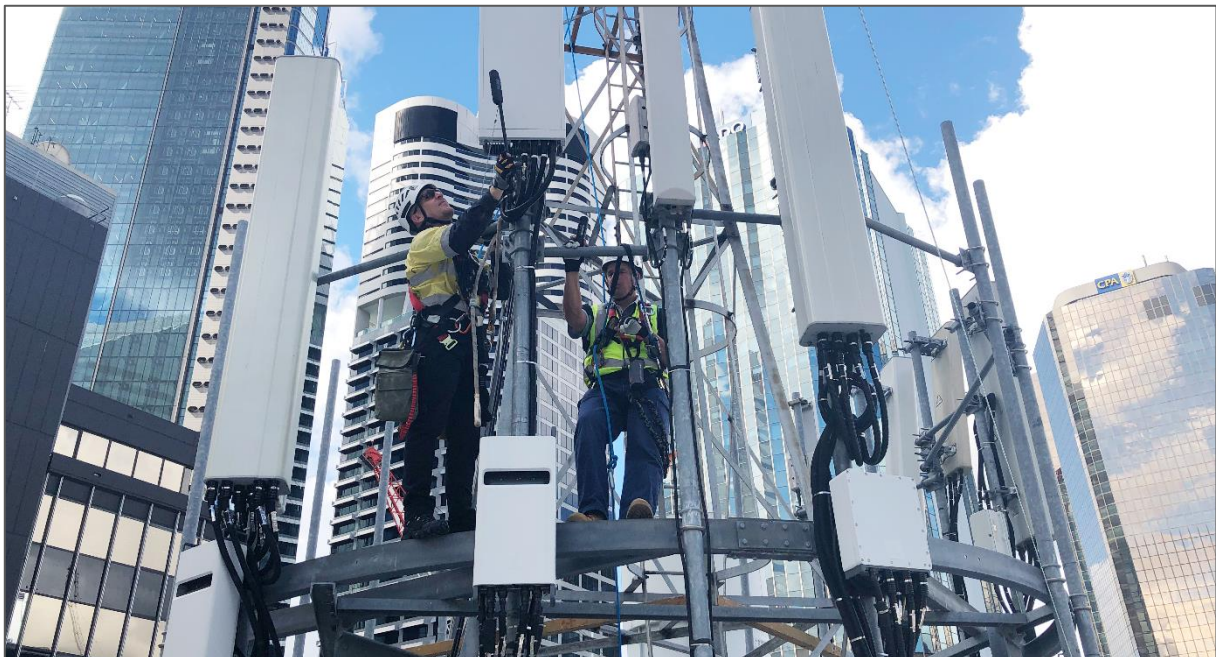
But, what if the personal monitor is not used exclusively by one person, maybe sometimes by employees and at other times by visitors to the company? Or, you want to give your staff a higher level of protection than that required by law, so that they are warned long before the value exceeds the limit?

For these situations, the **RadMan 2** with variable alarm threshold is now available. For safety, the alarm value can only be adjusted to your personal requirements using the **PC software** and not on the instrument itself.

In this way, you can take a **RadMan 2** that is factory set to the occupational limit and set it to the general public limit value which is five times lower. You can also do this with the **Nardalert S3** by the way.

Be aware, though that this feature has nothing to do with the technically quite simple personal monitors that use variable thresholds to try and mimic the limit value curve. Narda does not make compromises that affect safety. In Narda monitors, the limit value curve is reproduced directly in the device.

If you want to know what the shaping feature patented by Narda is all about, we have explained it in an **Application Note**.



Software updates:

There is a new software update for the Area Monitor AMB-8059 available for download from the Narda website [here](#). You will need to register on our website for this.

Also available for immediate download are the updated data sheets for the [Area Monitor AMB-8059](#) and [Area Monitor AMB-8059 \(Car Mounting Kit\)](#).

There is also a new data sheet for our [EHP-200](#). Read all about it and download it [here](#).

Instrument demonstrations:

Would you like a demonstration of these instruments or another Narda product? Contact your [Narda sales partner](#) and ask for details.

Seminars:

The seminar “[Exposure measurements on wireless transmitters with the SRM-3006](#)” is aimed at beginners, more experienced, and professional users in the field of selective measurement. Register for this seminar now [here](#). You can also ask our [sales partners](#) about individual seminar dates.

Want to keep up with the latest news? Check regularly for further updates at Narda [here](#).

